



# V-BOX WVPN passthrough



Website: <http://www.we-con.com.cn/en>

Technical Support: [support@we-con.com.cn](mailto:support@we-con.com.cn)

Skype: fcwkkj

Phone: 86-591-87868869

QQ: 1043098682

Technical forum: <http://wecon.freeforums.net/>



# WECON VPN passthrough tool use steps

## 1. List of program documents

- PC terminal program : Vpn\_PCclient.zip
- V-BOX Monitoring Configuration Tool: V-Box Install.zip
- Instructions for using V-BOX WVPN(WECON VPN) passthrough.pdf

## 2. Requirements

- PC program, currently supports
  - WIN7 32/64 system
  - WIN10 32/64 system
- V-BOX Monitoring Tool
  - Support to update S4G, E4G, H4G V-BOX mirroring to a transparent version
- V-BOX
  - Need to be able to connect to both Ethernet and WIFI at the same time or Ethernet and 4G at the same time

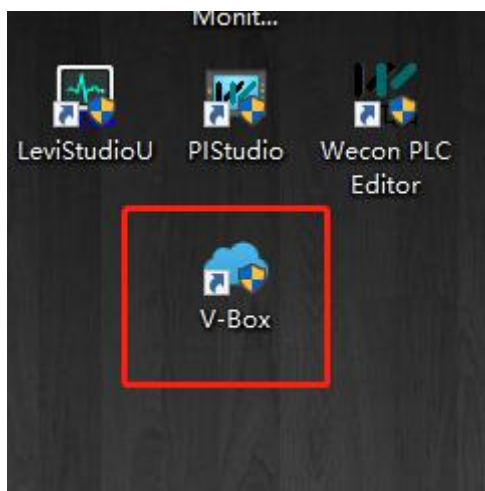
## 3. V-BOX

### Install V-Box Install.zip

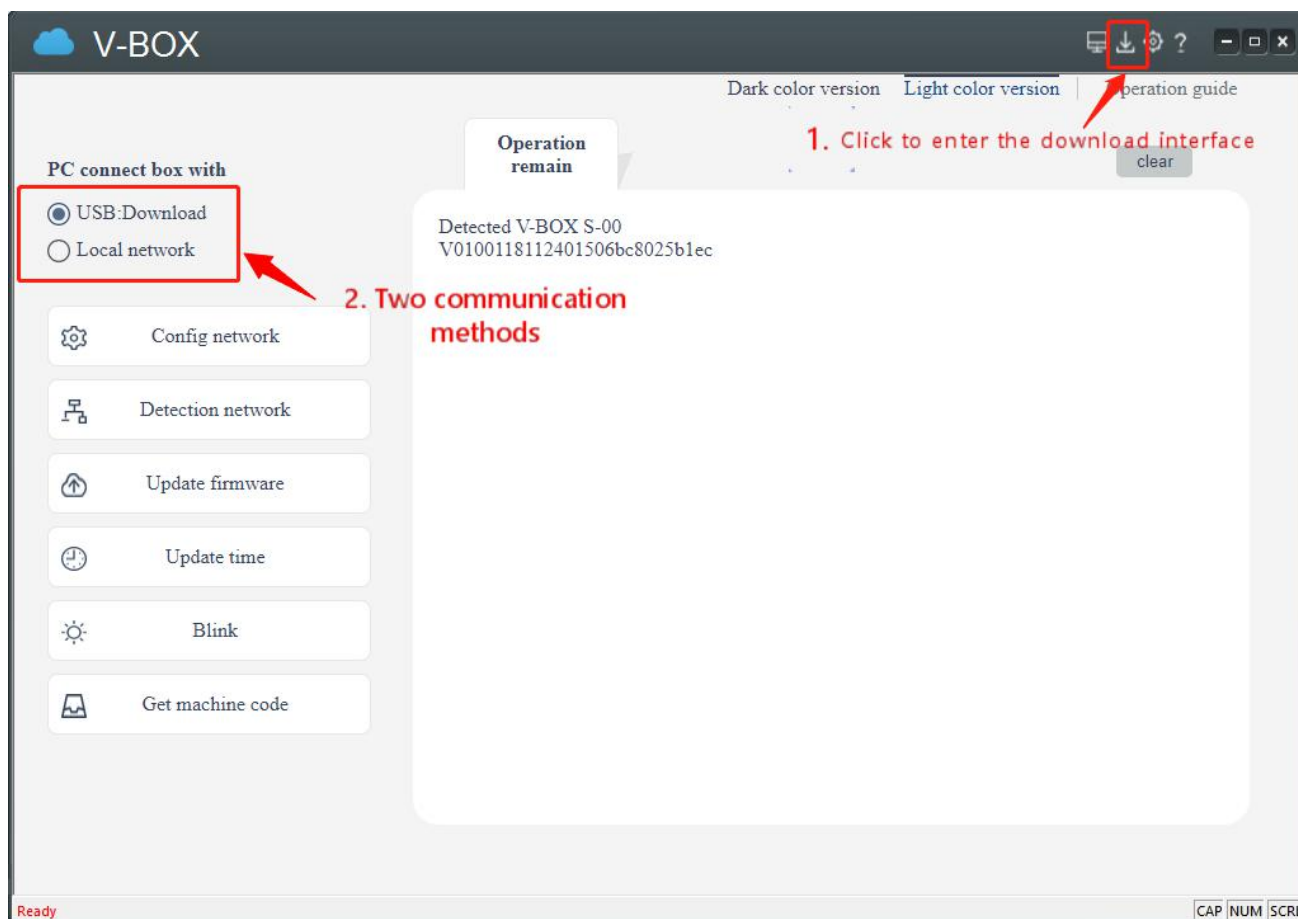
Install the latest version of V-BOX.

名称	压缩前	压缩后	类型	修改日期
.. (上级目录)			文件夹	
V-Box Install 20200904VPN.exe	74.5 MB	74.4 MB	应用程序	2020-09-04 09:41

After the installation is complete, the following icons will be added to the desktop.



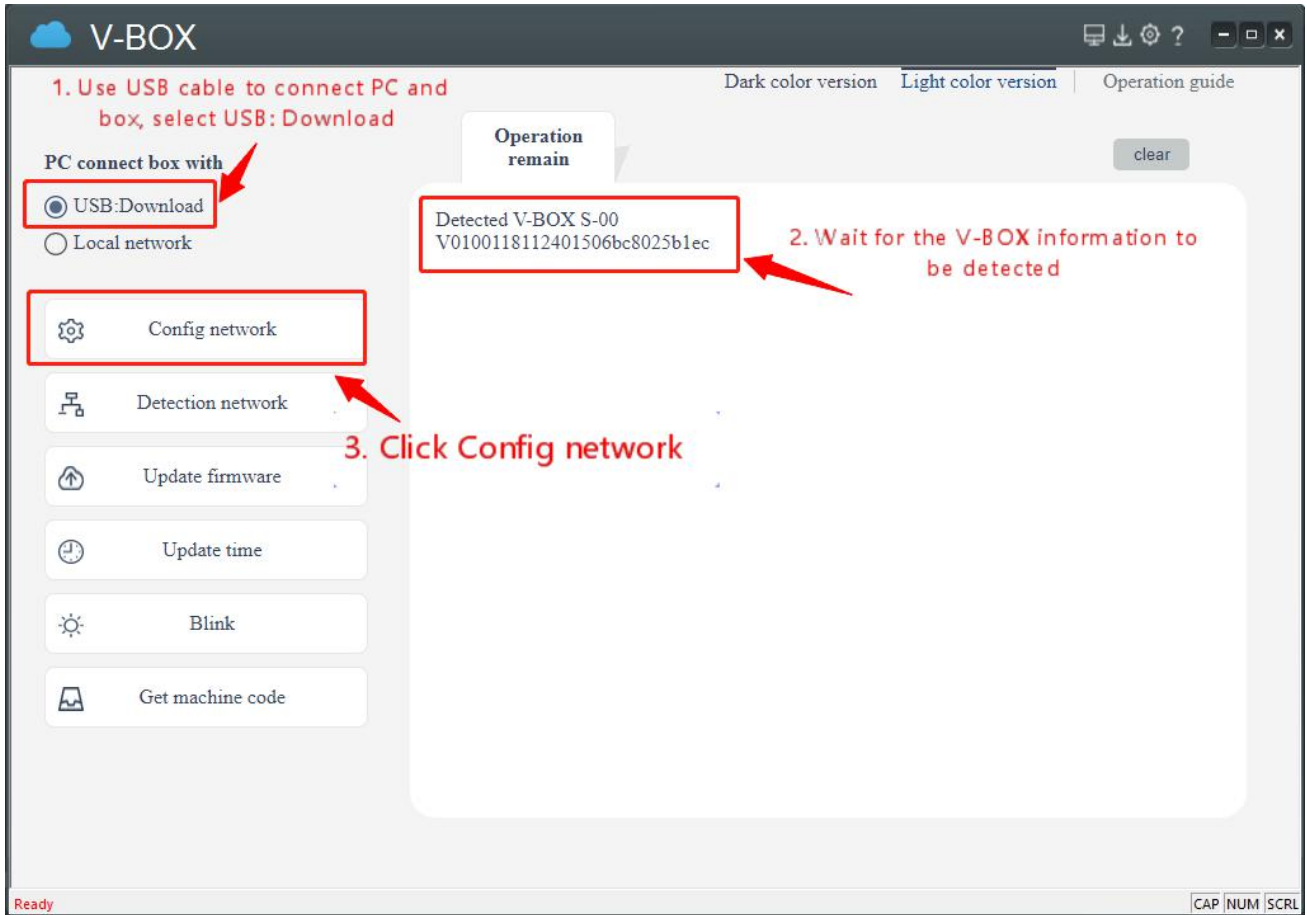
Double-click to open and enter the main interface of the V-BOX



### Download method (choose one)

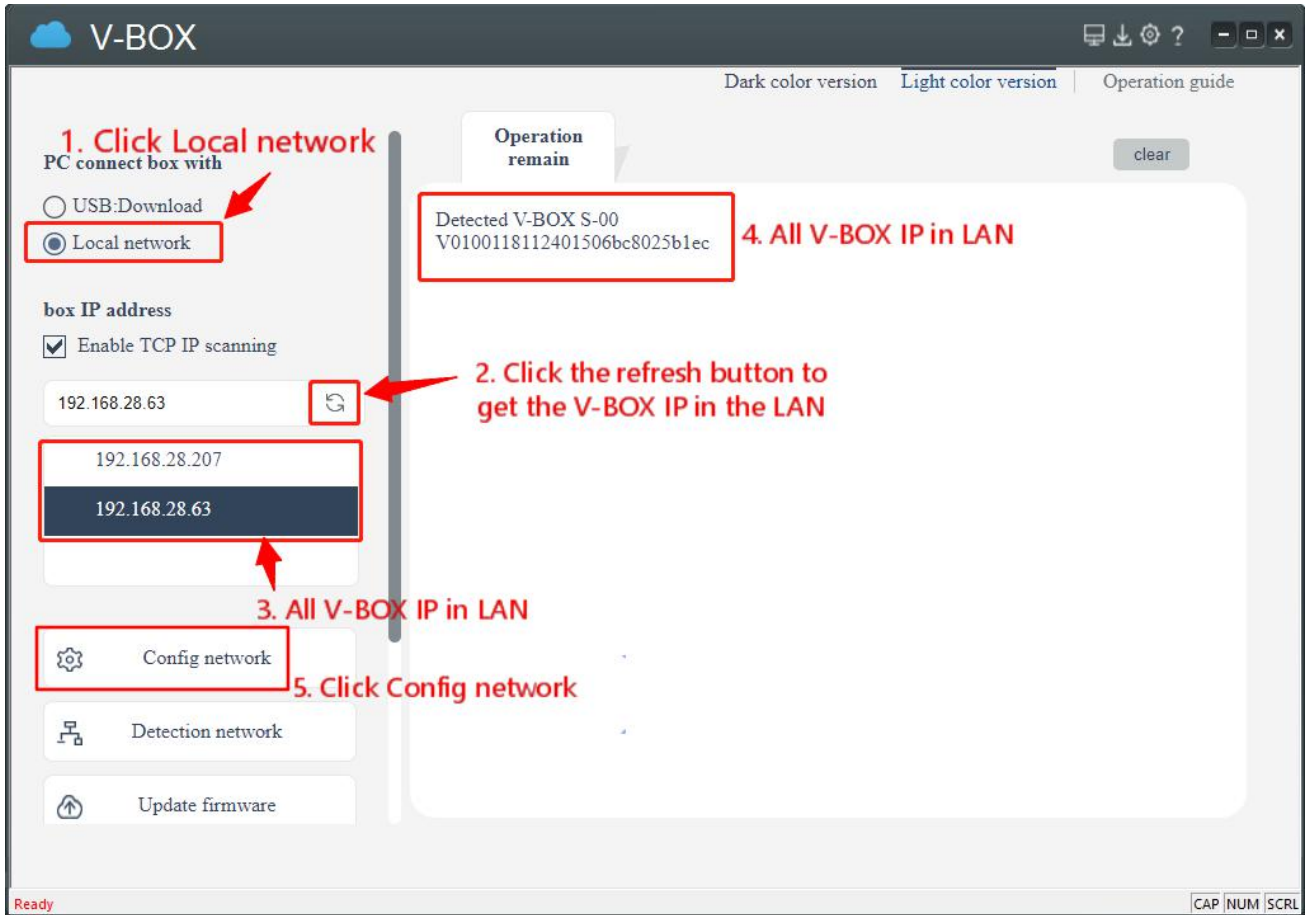
- **USB download**

When using the USB to connect the box and the PC, you could use the USB download method to download.



● **Local network download**

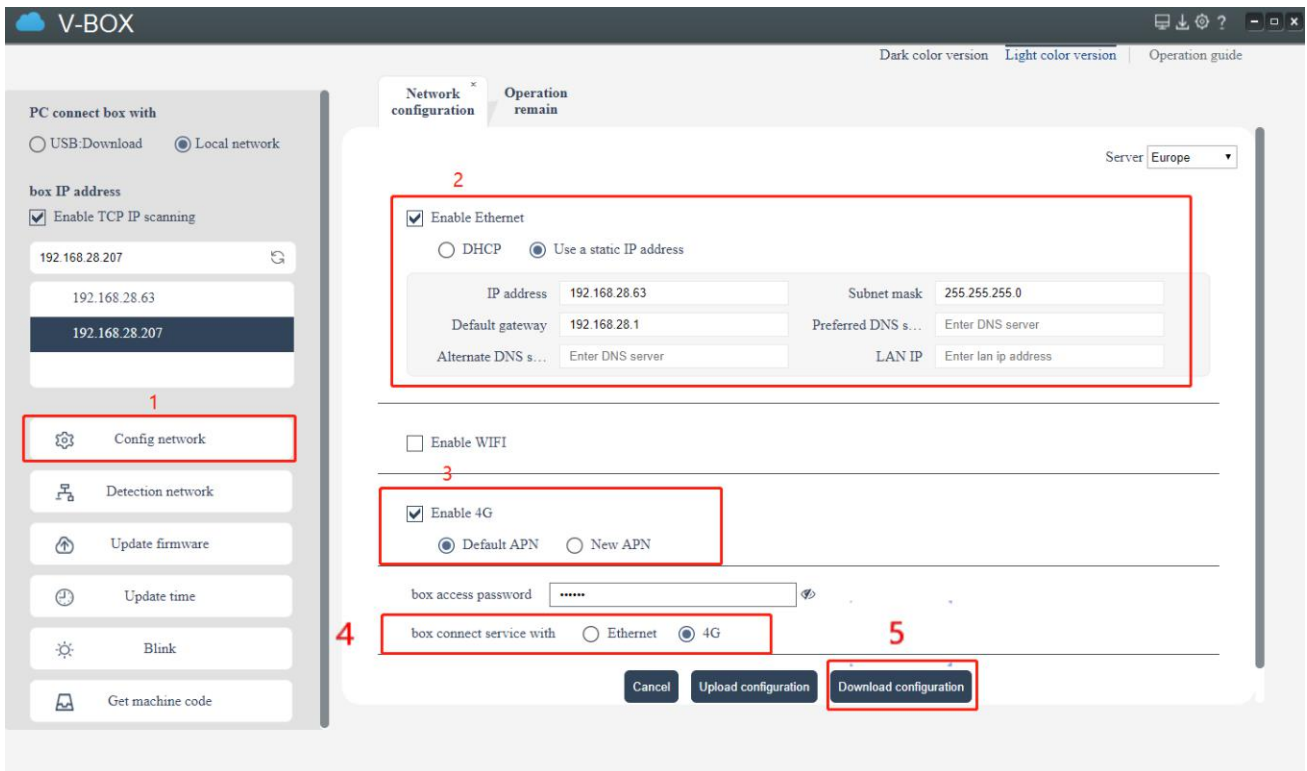
When the PC and V-BOX are in the same network segment or different network segments but the PC could access V-BOX, you could use the local network to download.



### Config network (choose one)

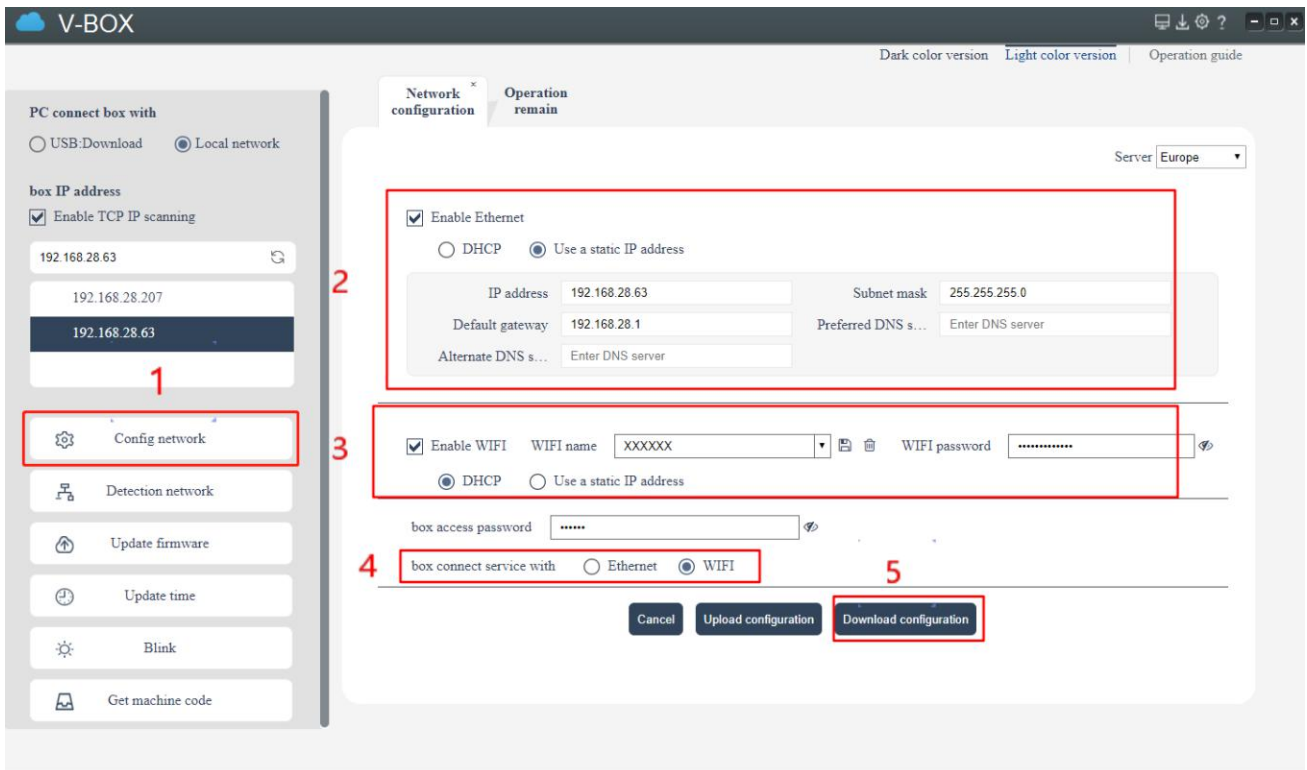
- Use Ethernet and 4G to network

At this time, Ethernet is used to connect to the intranet, and 4G is used to connect to the cloud.



● Use Ethernet and WIFI to network

At this time, Ethernet is used to connect to the intranet, and WIFI is used to connect to the cloud.

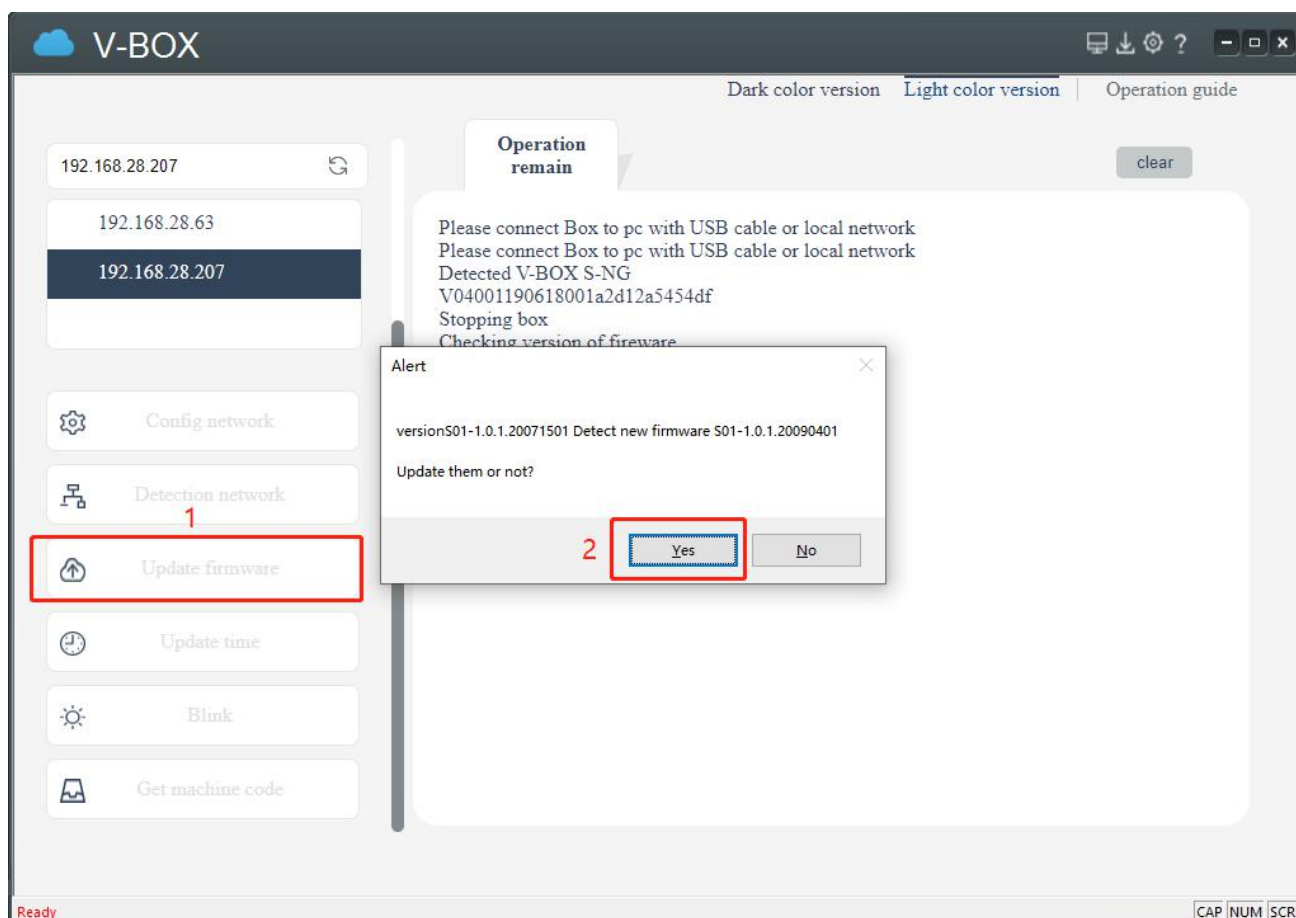


Update firmware

After clicking to update firmware, a pop-up prompts that the new firmware is available, click the Yes

button to update.

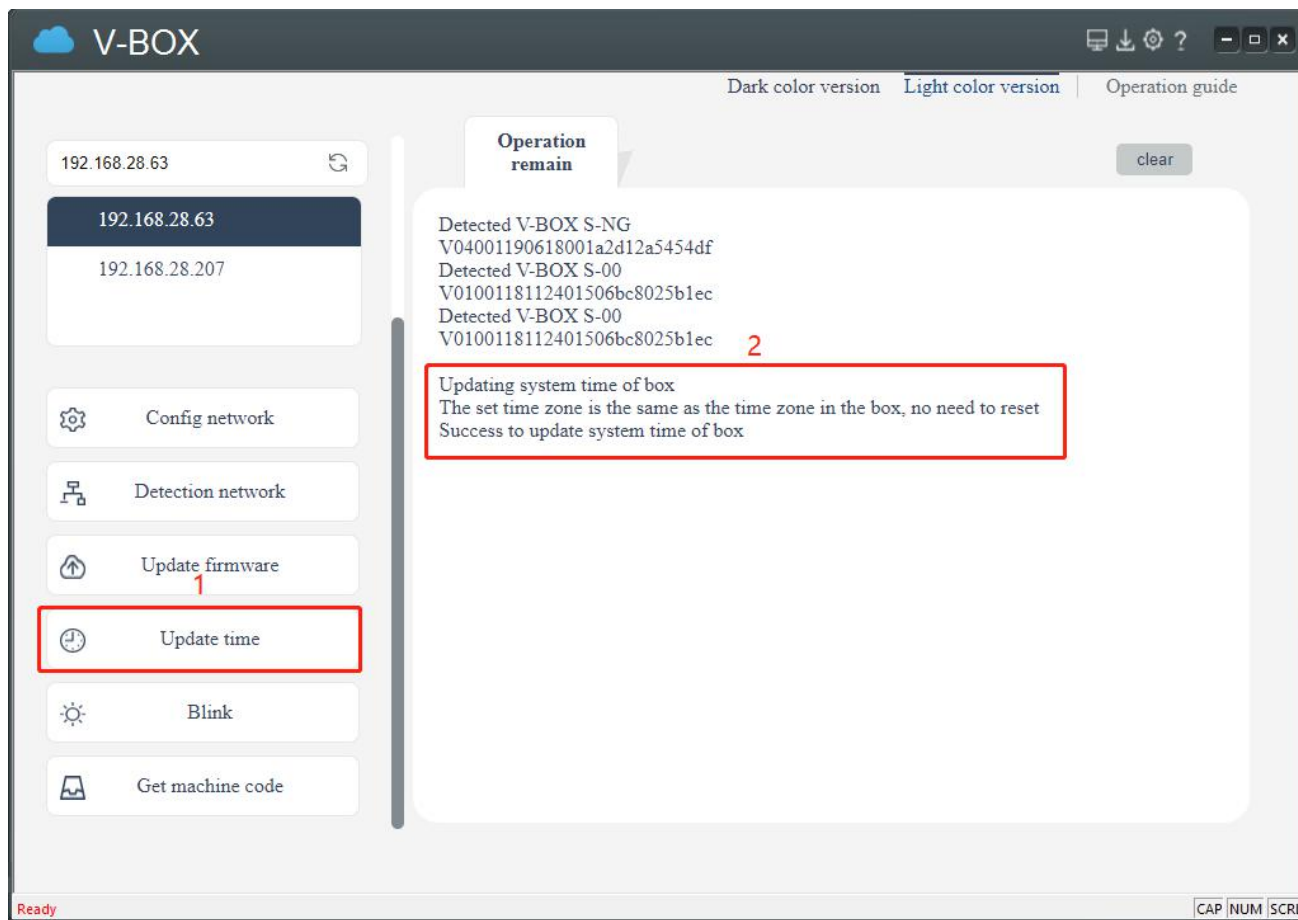
Note: After choosing to update firmware, be sure to wait for V-BOX to restart automatically, without powering off in the middle.



After V-BOX is restarted, it has been updated to a penetrable version and could be passthrough.

### Update time

After the restart is complete, click Update time to ensure that V-BOX time is correct (if V-BOX time is much different from the current time, it will cause VPN passthrough failed).

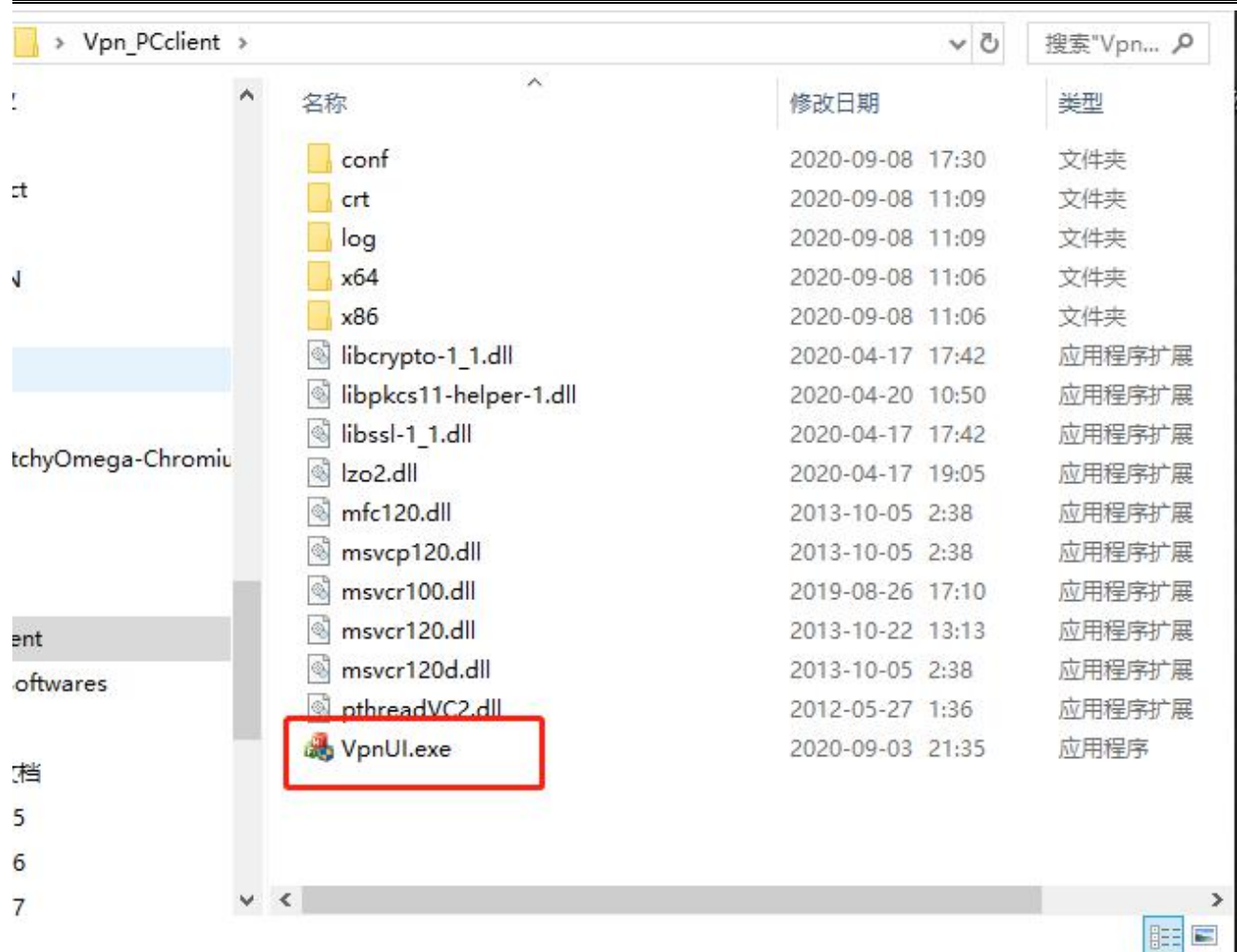


## 4. PC

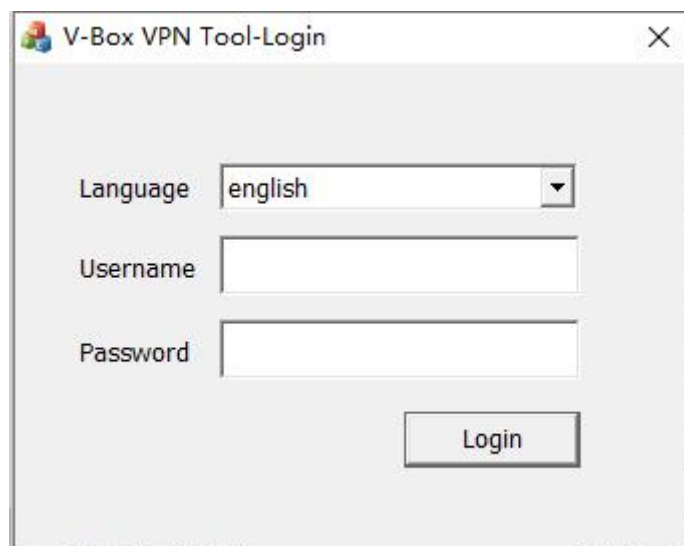
### Run the program

After decompressing the PC program compression package, enter the directory and double-click to run the program.





Use the V-NET account to log in on the login interface.

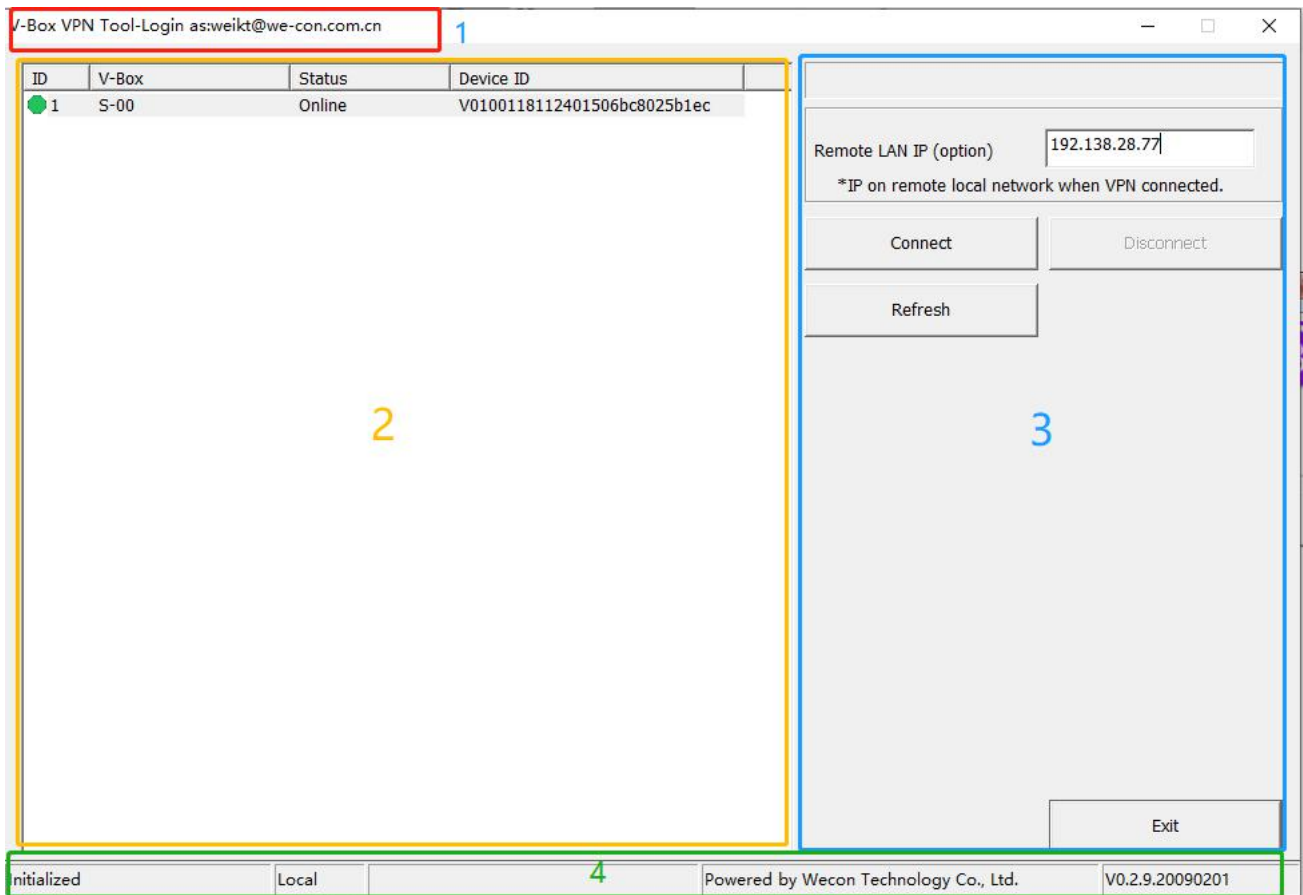


## Main interface introduction

After successful login, the main interface parts are as follows

1. Title bar: Display the currently logged-in user.
2. V-BOX list : Display V-BOX information that the currently logged-in user could passthrough.

3. The operation panel contains the following parts
  - Progress bar: indicates the progress of the operation.
  - Remote LAN IP input box: Fill in the Remote LAN IP.
  - Operation buttons: used to start penetration, end penetration, refresh status, exit and other operations.
4. Status bar: Contains operation status, total number of devices/online/penetration number, local penetration device, copyright, and version information.



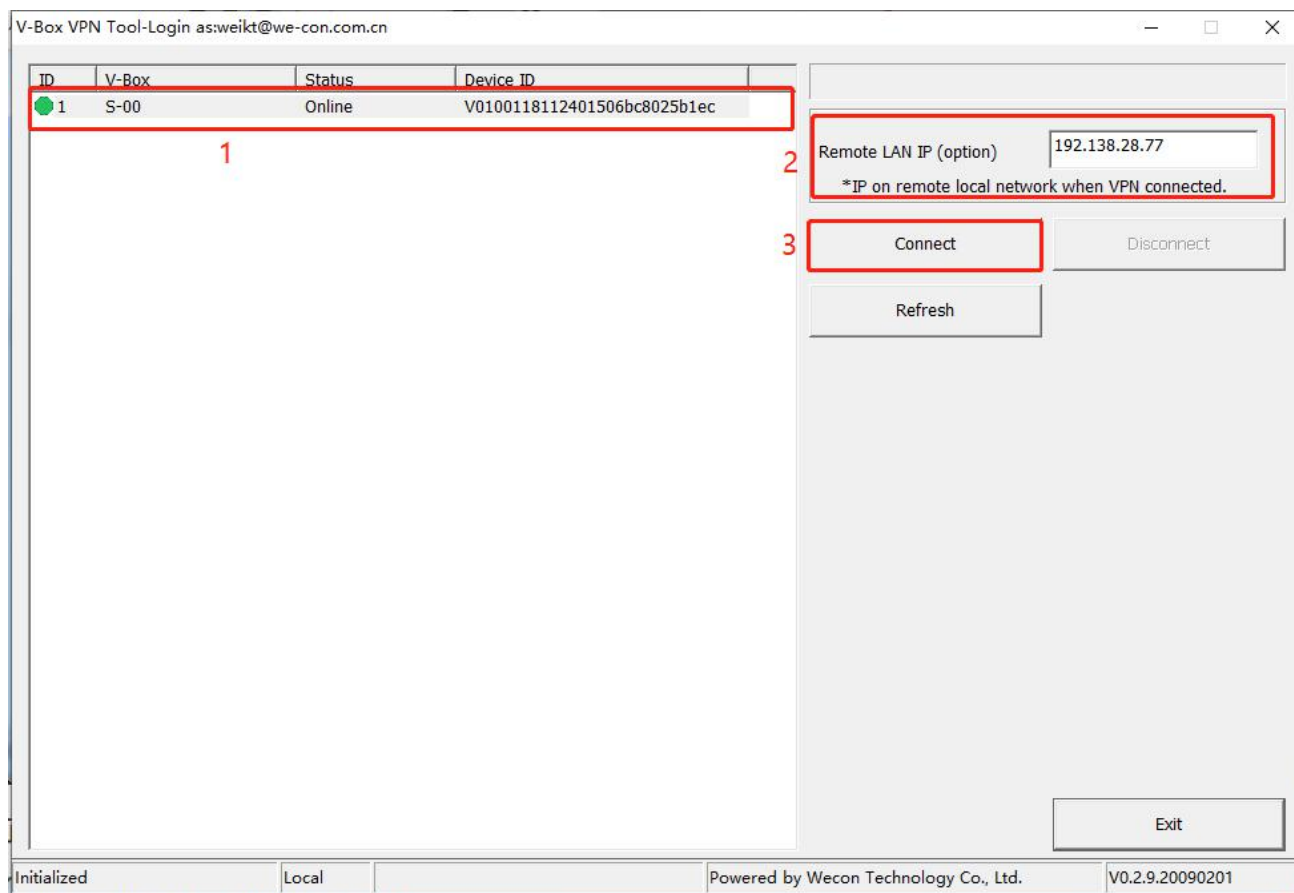
### Start penetration demonstration

● **step**

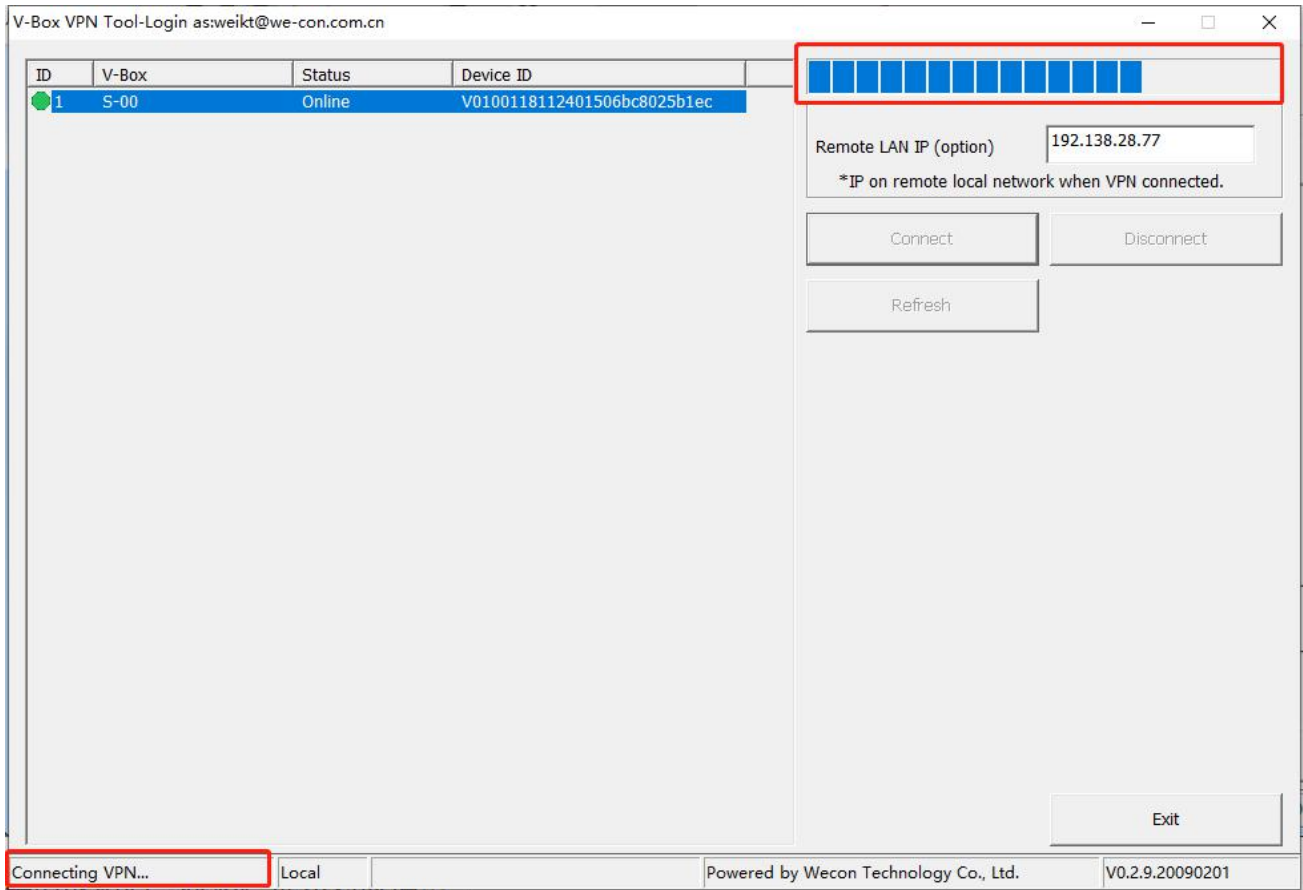
1. Select V-BOX in the "online" state in the V-BOX list.
2. Fill in the LAN IP (please refer to how to "Remote LAN IP").
3. Click the "Connect" button.

● **Icon**

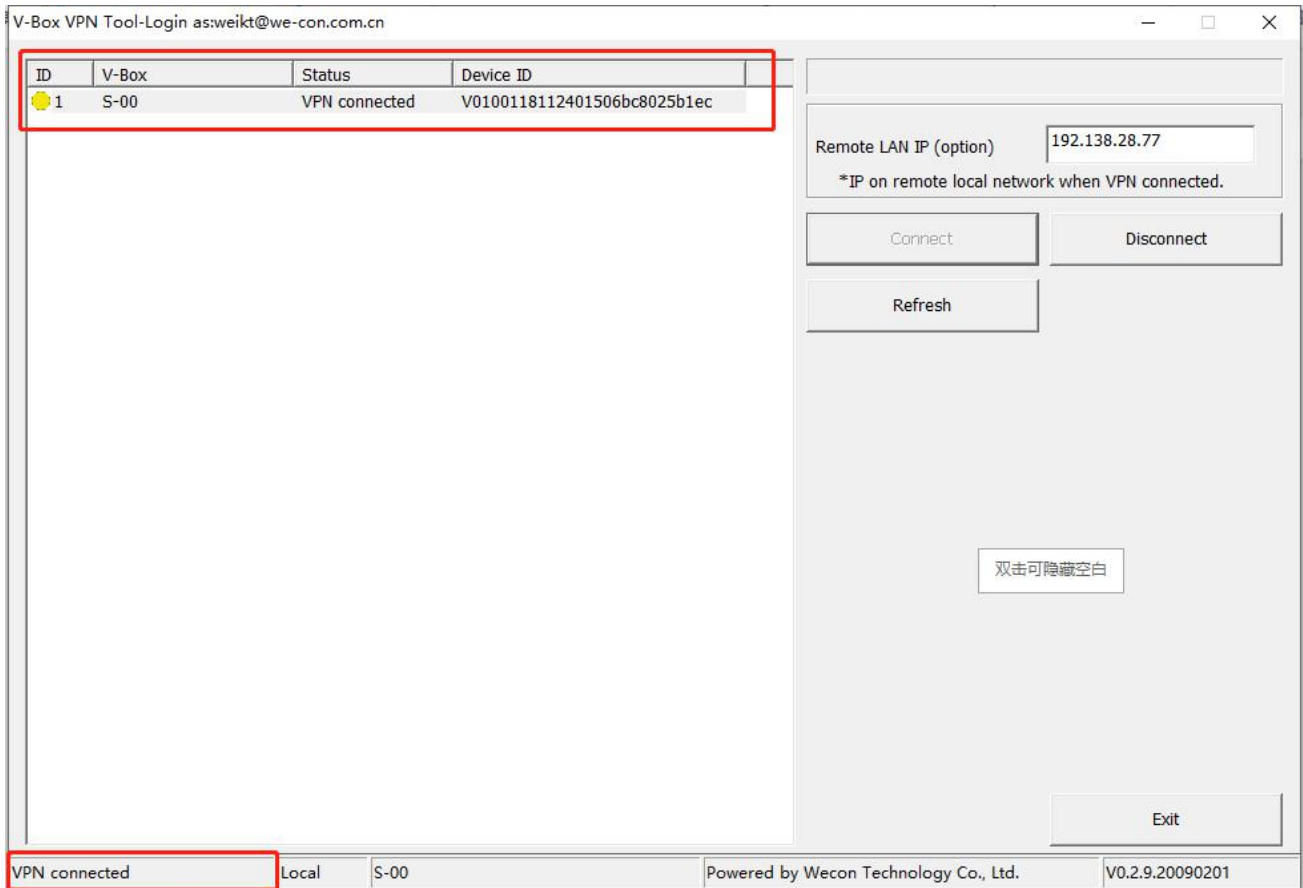
Start to passthrough:



During passthrough, please refer to the progress bar and status bar to understand the passthrough progress:



After the passthrough is successful, the status bar prompts the corresponding information:



## How to choose Remote LAN IP?

### 1. For PLC and PC LAN using different network segments:

If the PLC is directly connected to the V-BOX, all IPs not used by the PLC can be used in the network segment where the PLC is located.

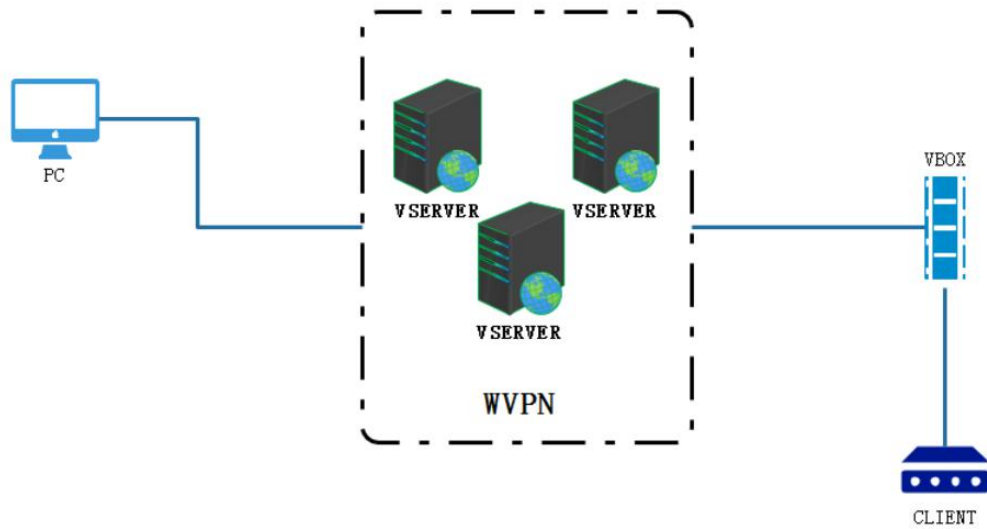
If the PLC and V-BOX are connected through a router or switch, in the network segment where the PLC is located, all idle IPs that are not used by the PLC and other devices on the network where the PLC is located can be used.

### 2. For PLC and PC LAN using the same network segment:

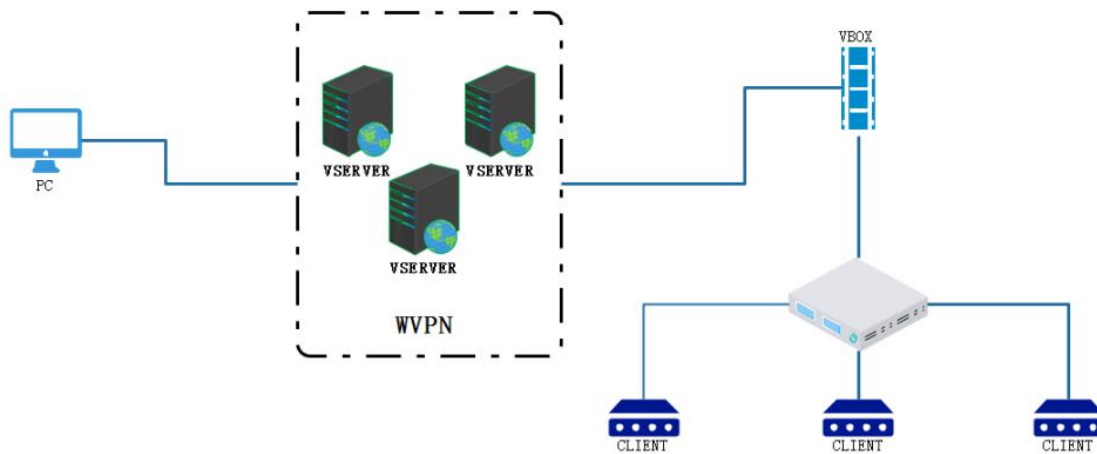
If the PLC is directly connected to the V-BOX, in the network segment where the PLC is located, all idle IPs that are not used by the PLC and other devices on the network where the machine is located can be used.

If the PLC and V-BOX are connected through a router or switch, in the network segment where the PLC is located, all idle IPs that are not used by the PLC, other devices on the network where the PLC is located, and other devices on the network where the PC is located can be used.

Note: If the selected IP is already occupied, it will affect the use of the penetration function.



Direct connection between V-BOX and CLIENT



V-BOX and CLIENT are connected via router or switch

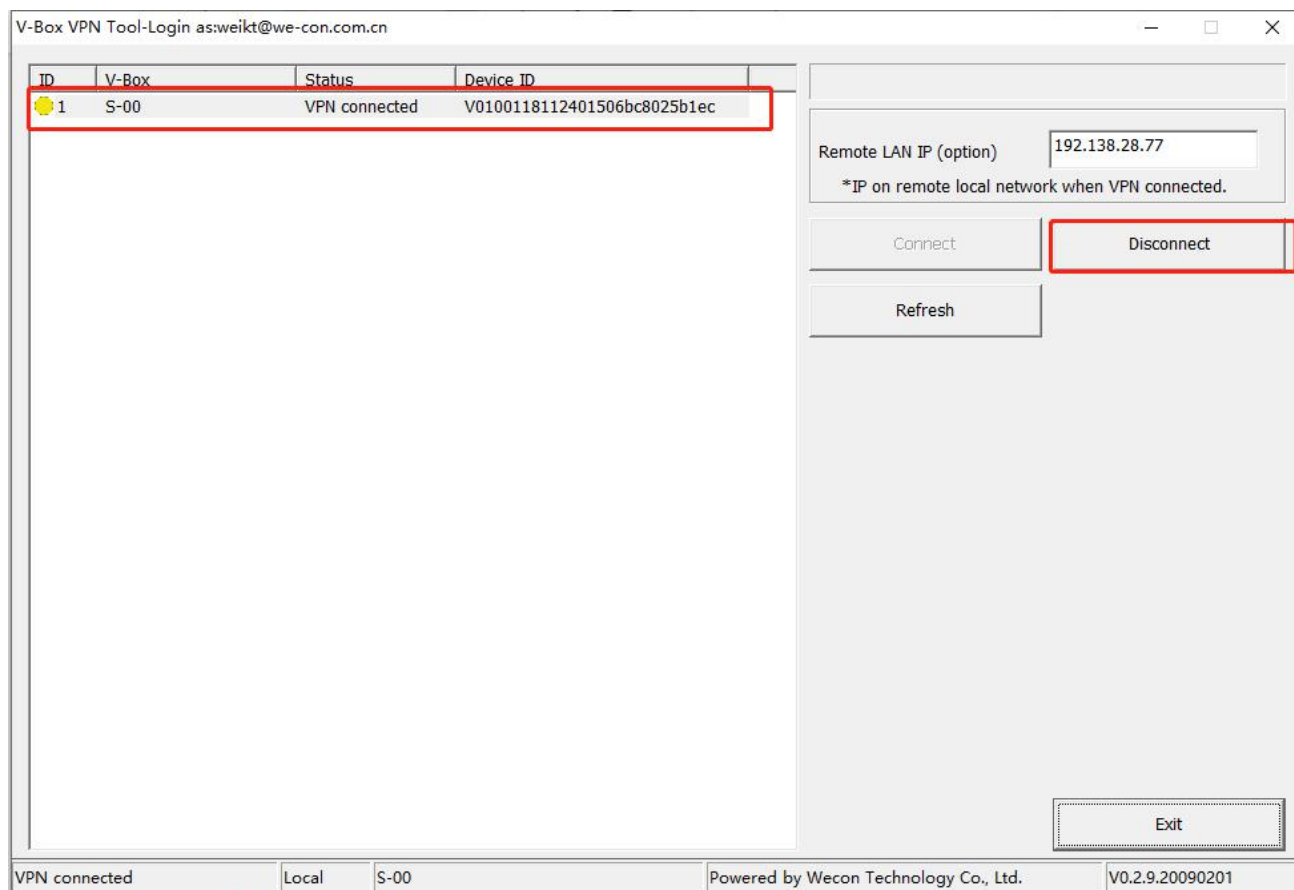
## End passthrough demonstration

- **step**

1. In V-BOX list, select V-BOX that is in the state of "VPN connected" and that is passthrough by the machine.
2. Click the "Disconnect" button.

- **Icon**

End passthrough:



### Refresh status demonstration

- **step**

1. Click the "Refresh" button.

- **Icon**

Refresh status:

V-Box VPN Tool-Login as:weikt@we-con.com.cn

ID	V-Box	Status	Device ID
1	S-00	VPN connected	V0100118112401506bc8025b1ec

Remote LAN IP (option)   
 \*IP on remote local network when VPN connected.

Connect Disconnect

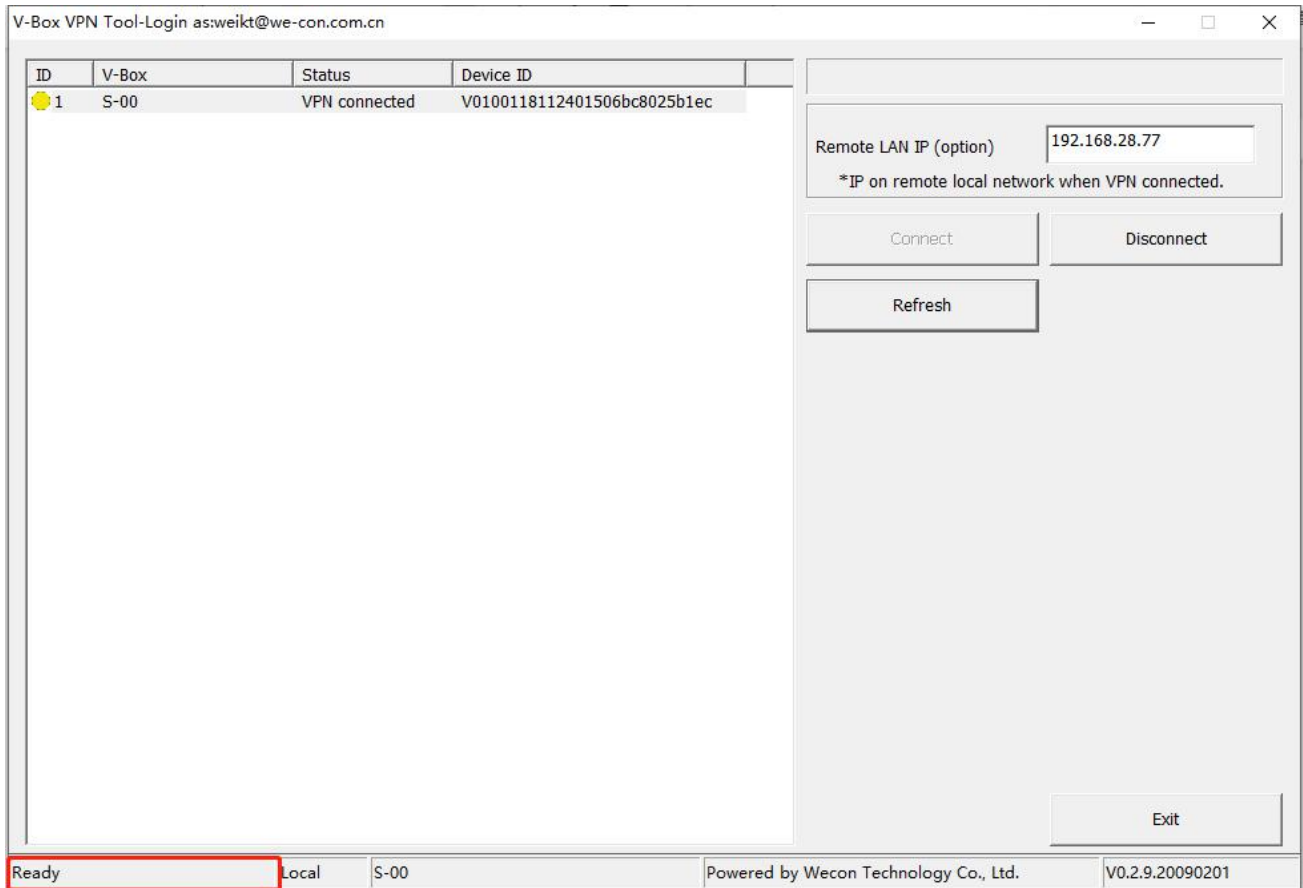
Refresh

Exit

Refreshing... Local S-00 Powered by Wecon Technology Co., Ltd. V0.2.9.20090201

After the refresh is successful, the status bar prompts the corresponding information:





### State type

V-BOX has five states:

1. Offline (gray icon): VPN passthrough is not possible.
2. Online (green icon): VPN passthrough status is available.
3. VPN connecting (yellow icon): VPN passthrough status.
4. VPN reconnecting (red icon): VPN reconnecting status due to network and other reasons.
5. VPN ending (blue icon): VPN ending status due to end passthrough.

### Exit the program demo

- **step**

1. Click the "Exit" button.

- **Icon**

exit the program:

V-Box VPN Tool-Login as:weikt@we-con.com.cn

ID	V-Box	Status	Device ID
1	S-00	VPN connected	V0100118112401506bc8025b1ec

Remote LAN IP (option)   
\*IP on remote local network when VPN connected.

Ready Local S-00 Powered by Wecon Technology Co., Ltd. V0.2.9.20090201